

MLC - Liquid X Liquid with High Pressure Reserve

Western Innovator MLC and MLC Hybrid Manifolds are designed to regulate and monitor vaporized gas from cryogenic cylinders. The system automatically changes over when the primary cylinder bank is depleted. A simple rotation of the control lever resets the unit.

When used with Western's MCLA series high pressure reserve healthcare manifolds, dual line regulator assembly, pressure switches and check valves, the systems meet NFPA-99 2012 requirements.

specifications

- NFPA Compliant, Analog Automatic System
- CSA Approved Power Source included
- Adjustable line regulator
 - MLC 40-85 psig
 - MLCHP 40-180 psig
- Maximum flow: MLC 750 scfh
MLCHP 800 scfh
- Maximum inlet pressure 350 psig (MLC)
- Manifold outlet: 1/2" NPT male
- Relief valve outlet: 1/4" NPT male
- 72" Cryogenic pigtails with check valves
- Minimum inlet pressure: MLC 125 psig
MLCHP 250 psig
- MLC Series for use with 235 psig relief valve Dewars
- MLCHP Series for use with 350 psig relief valve Dewars
- Connects to remote alarms systems
(Up to 3 amps 30 VDC or 2 amps 250 VAC)



HOW TO ORDER

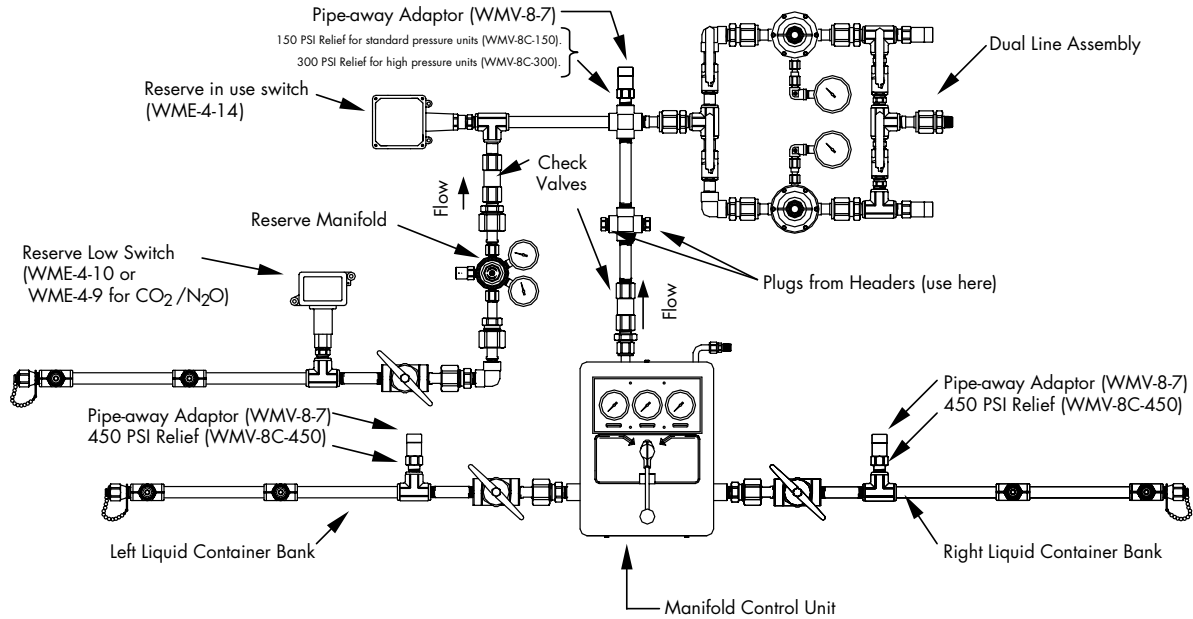
Specify: Control Type (V)-Service (W)-Number of Liquid Cylinders (X) Number of Reserve H.P. Cylinders (Y)-Number of Secondary H.P. Cylinders (Z)				
Example MLC-9-2-6 represents MLC with Oxy Liquid gas service for Cryogenic Cylinder per side, 6 HP Reserve Cylinders.				
CONTROL TYPE (V)	GAS SERVICE (W)	# OF LIQUID CYL'S (X)	# OF RESERVE HIGH PRESSURE CYLINDERS (Y)	# OF SECONDARY HIGH PRESSURE CYLINDERS (Z)*
MLC (40-85 psig)	(3) Argon CGA-580			
	(4) Carbon Dioxide CGA-320			
MLCHP (40-180 psig) (Nitrogen units only are adjustable - 40-210 psig)	(7) Nitrogen CGA-580			
	(8) Nitrous Oxide CGA-326			
	(9) Oxygen CGA-540			

*Hybrid only, Hybrid systems are designed for High Pressure cylinders as the secondary supply.

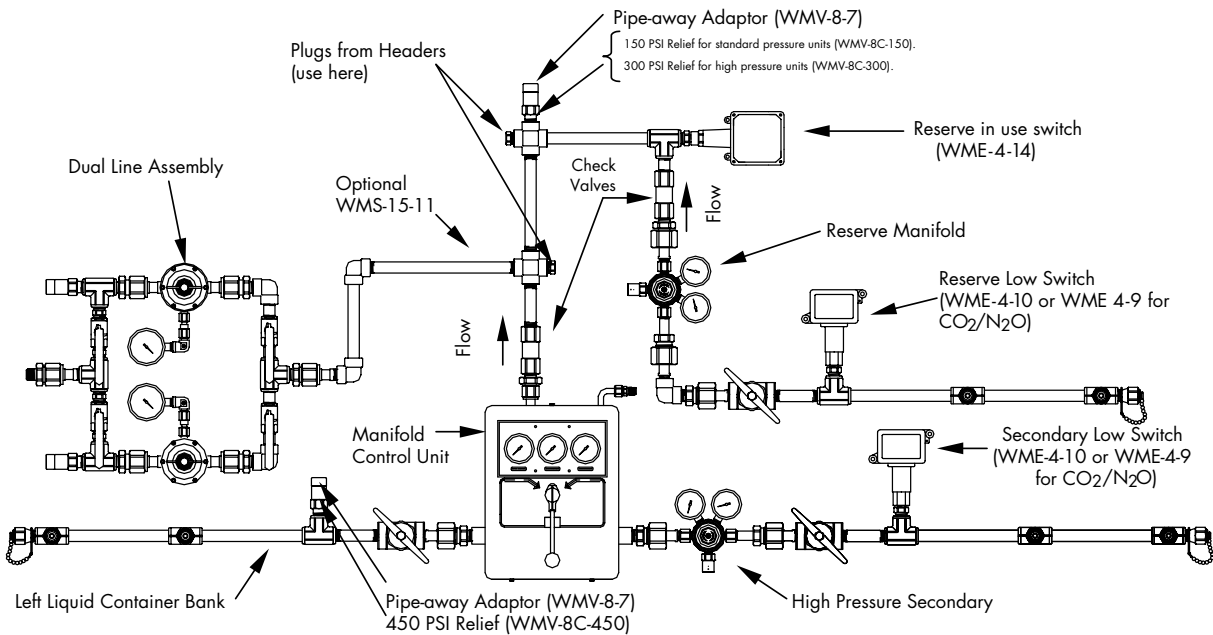
Note: Manifold system flow is limited by the max. flow capacity of the liquid cylinder. Consult cylinder manufacturer for flow data. System flow capacity may be increased with the addition of liquid cylinders.

MLC series

MLC Hybrid-Liquid X High Pressure with High Pressure Reserve



MODEL: MLC(HP)-W-X-YL



MODEL: Hybrid MLC(HP)-W-X-Y-Z

NOTE: Optional WMS-15-11 used in this assembly.

*Other configurations possible