

KWIKLOK Quick Connects

BY WESTERN ENTERPRISES

OSHA - Compliant Quick Connect Sets

Western's Kwiklok Quick Connects are designed with a rotational sleeve locking ring that prevents accidental separation or a straight pull without rotary motion.

- Complies with OSHA Requirements* – cannot be disconnected by means of a straight pull without rotary motion
- UL Listed and 100% Tested for safety and reliability
- Color-Coded for Fuel Gas, Oxygen and Inert gases
- Demand Valve prevents gas flow when disconnected
- Reverse Flow Check Valves in oxygen and fuel gas models
- Non-interchangeable connections prevent gas mixing
- Durable brass construction for long service life
- Packaged for Retail Display
- Designed for Shipyards, Oil Platforms, Metal Fabrication, Construction and other OSHA inspected facilities

HOW TO ORDER

Item #	Description
QDB40	Torch to Hose Set (Oxy/Fuel), 9/16"-18 UNF ¹
QDB50	Hose to Hose Set (Oxy/Fuel), 9/16"-18 UNF ¹
QDB60	Regulator to Hose Set (Oxy/Fuel), 9/16"-18 UNF ¹
QDB73	Inert Hose to Machine Set, 5/8" - 18 RH UNF ¹
QDB74	Inert Hose to Machine Set, 5/8" - 18 RH UNF ¹

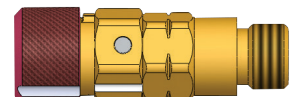
¹ **⚠ WARNING:** This product can expose you to lead, which is known to the State of California to cause cancer and birth defects or other reproductive harm. For more information go to www.P65Warnings.ca.gov.



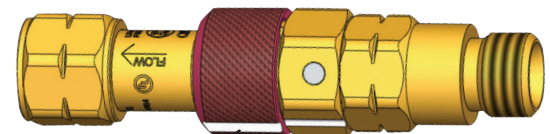
WESTERN
ENTERPRISES



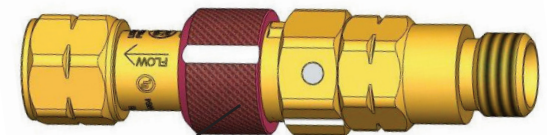
Male Plug



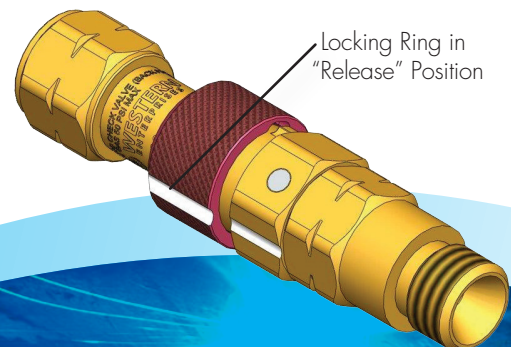
Female Socket with
Rotational Locking Feature



Locking Ring in "Connect" Position



Locking Ring Rotated to Secure Connection



Locking Ring in
"Release" Position

Standard Quick Connects

BY WESTERN ENTERPRISES

Western's Quick Connects provide fast, reliable and positive connections and disconnections for torches, hoses and regulators. All models are color-coded for gas service for added ease of use and safety. Quick Connects fit all B-size welding and cutting equipment.

STANDARD QUICK CONNECTS FEATURES

- Brass construction provides long service life-cycle tested over 10,000 operations indicating a service life of over 10 years of comparable use.
- Non-interchangeable Oxygen and Fuel Gas connectors prevent accidental gas mixing.
- Instant closure on reverse flow Check Valves with total shutoff at only 10 oz. of back pressure.
- Packaged for Retail Display
- UL Listed and 100% Tested
- Color-Coded for Fuel Gas (Red), Oxygen (Green), and Inert Gases (Blue)

HOW TO ORDER

Item #	Description
QDB10	Torch to Hose, 9/16" - 18 UNF ¹
QDB20	Hose to Hose, 9/16" - 18 UNF ¹
QDB30	Regulator to Hose, 9/16" - 18 UNF ¹
QDB33	Inert Regulator to Hose, 5/8" - 18 RH UNF ¹
QDB34	Inert Hose to Machine, 5/8" - 18 RH UNF ¹

¹ **⚠ WARNING:** This product can expose you to lead, which is known to the State of California to cause cancer and birth defects or other reproductive harm. For more information go to www.P65Warnings.ca.gov.



Distributed by: